



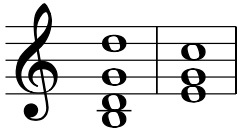
To print out this puzzle, click on 'File' and then 'Print' in the menu at the top of your browser.

Cadences Puzzle

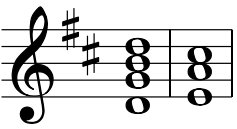
Can you work out which type of cadence each pair of chords forms? Each one is either perfect, imperfect, plagal or interrupted.

(If you need help, see pages 36-37 of the Usborne book *Music Theory for Beginners*.)

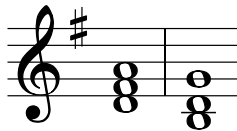
1.



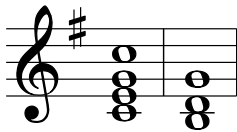
2.



3.



4.



5.

