



Usborne

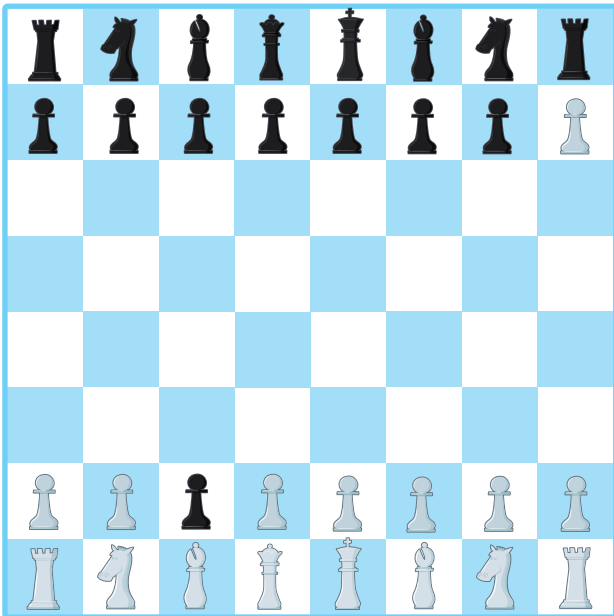
My first chess puzzles

1. Setting the board

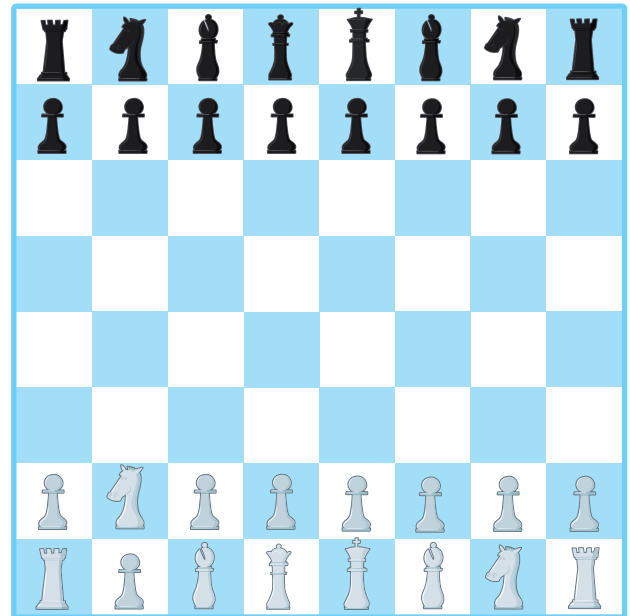


Do you know where all the chess pieces go at the start of a game? On each of these boards there are two pieces in the wrong places. Can you spot which ones they are?

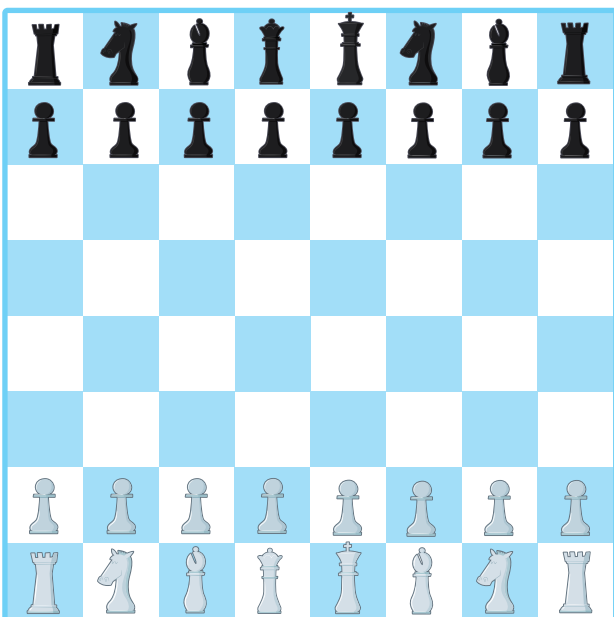
A



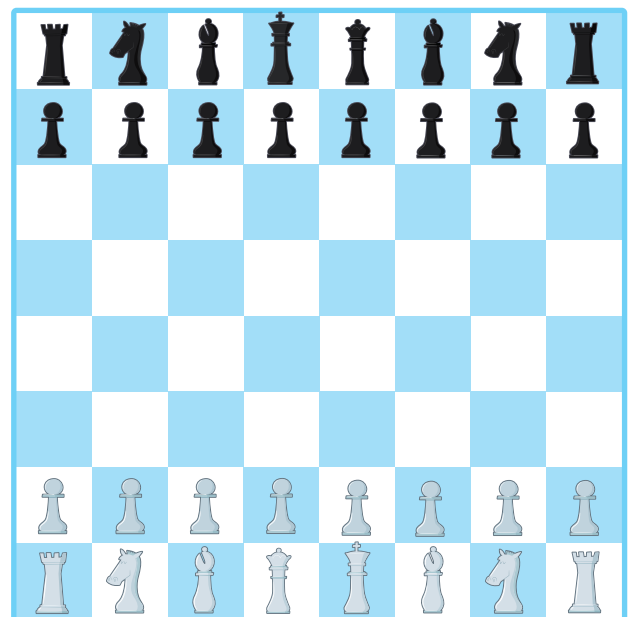
B



C



D



B. A white pawn and a white knight
D. The black king and the black queen

A. A white pawn and a black pawn
C. A black knight and a black bishop

Answers