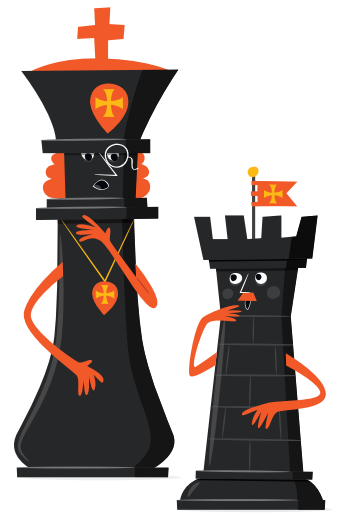




Usborne

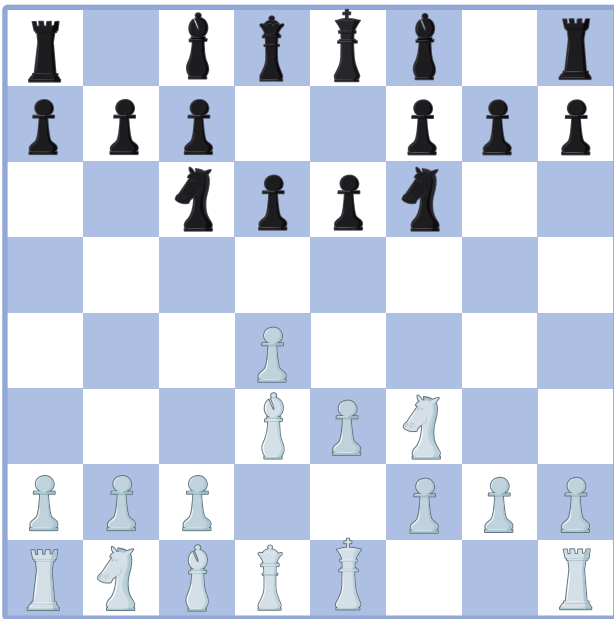
My first chess puzzles

4. Who can castle?

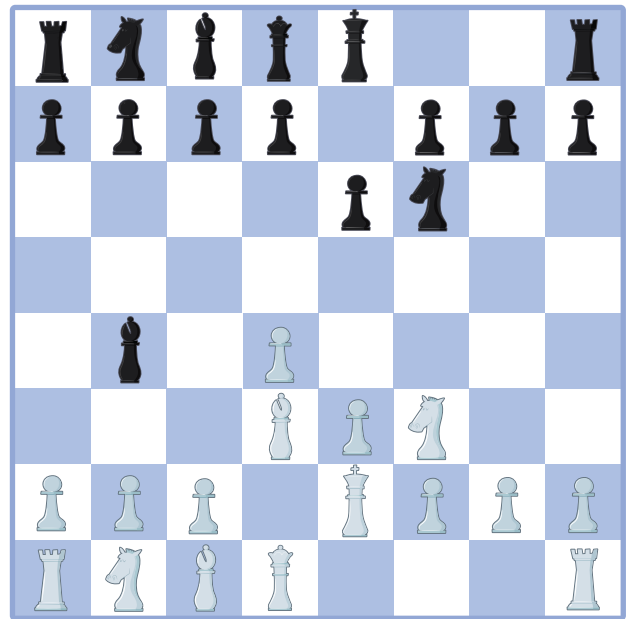


Can you remember the rules on when to castle?
Take a look at these boards and work out who can castle on their next move – white, black or neither.

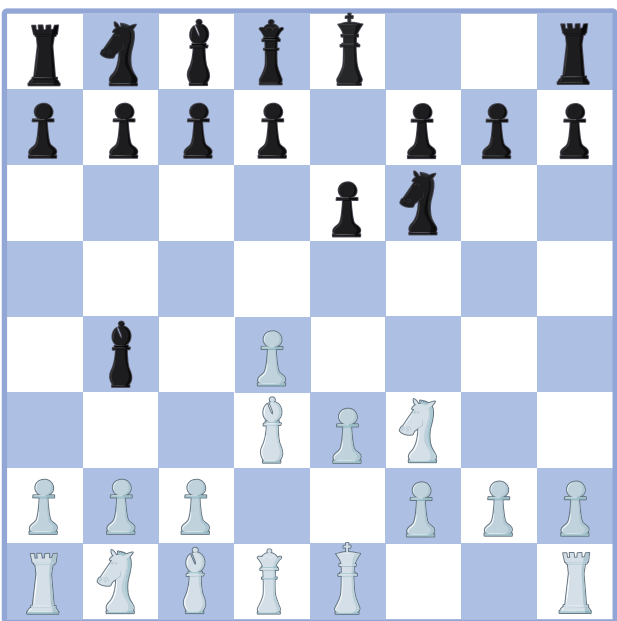
A



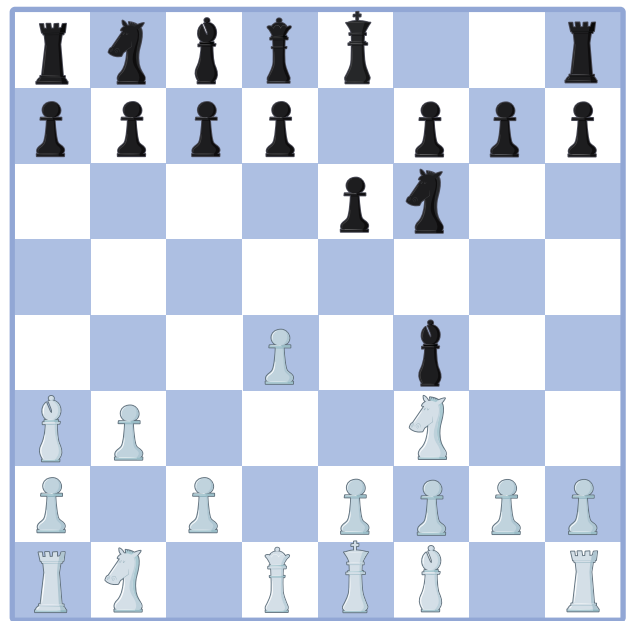
B



C



D



Answers
A. White. (Black's bishop is in the way.)
B. Black. (The white king has moved.)
C. Black. (White is in check from the bishop.)
D. Neither. (White is blocked and black can't move through check from the white bishop.)