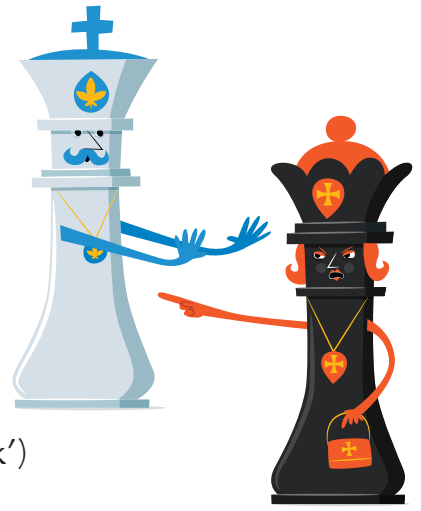




Usborne

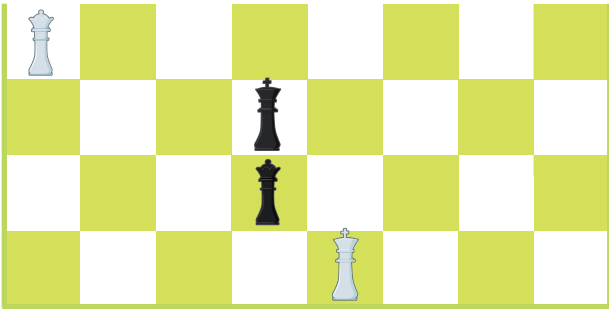
# My first chess puzzles

## 5. Escaping check

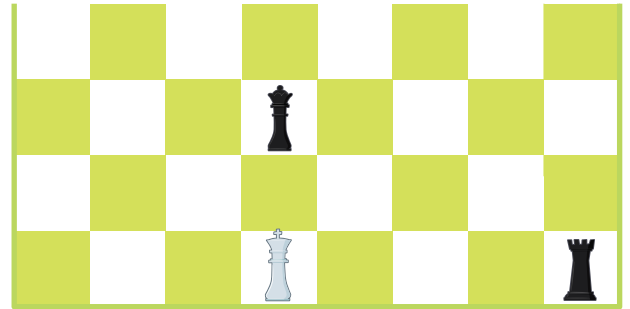


On each of these boards the white king is under threat. It's white's turn to move. Can the king escape (so it's just 'check') or is it game over ('checkmate')?

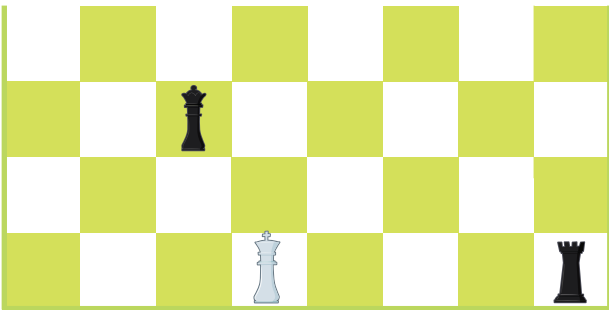
A



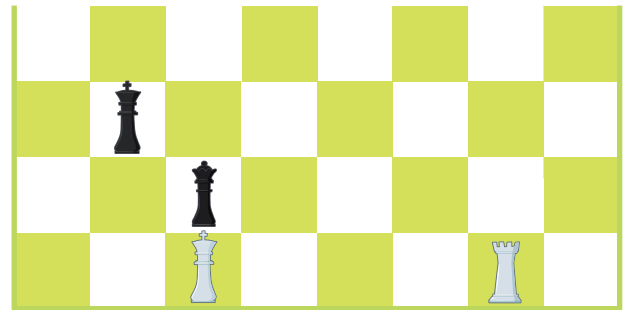
B



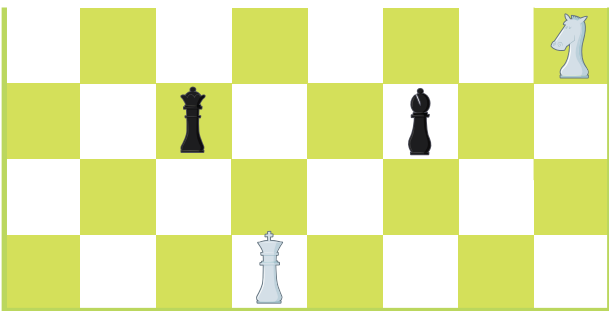
C



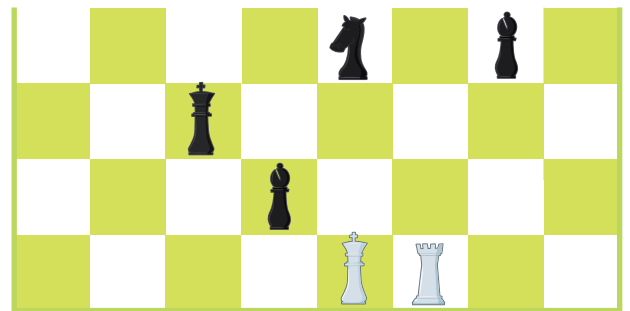
D



E



F



A. Check. (The king can move one space to the right.) B. Checkmate!  
C. Check. (The king can move diagonally right.)  
D. Checkmate! (The king can't capture the Queen because he can't move INTO check.)  
E. Check. (The white knight can capture the black bishop.)  
F. Checkmate!

Answers