



Usborne

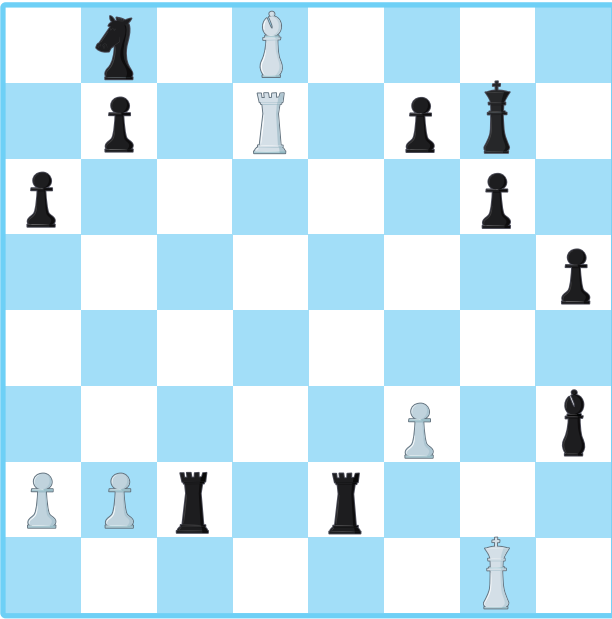
My first chess puzzles

6. Checkmate in one

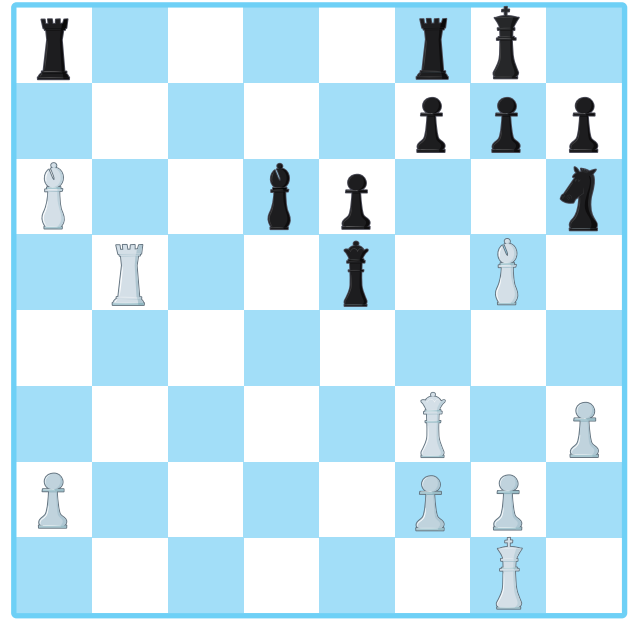
On each of these boards it's black's turn.
How can black get checkmate in one move?



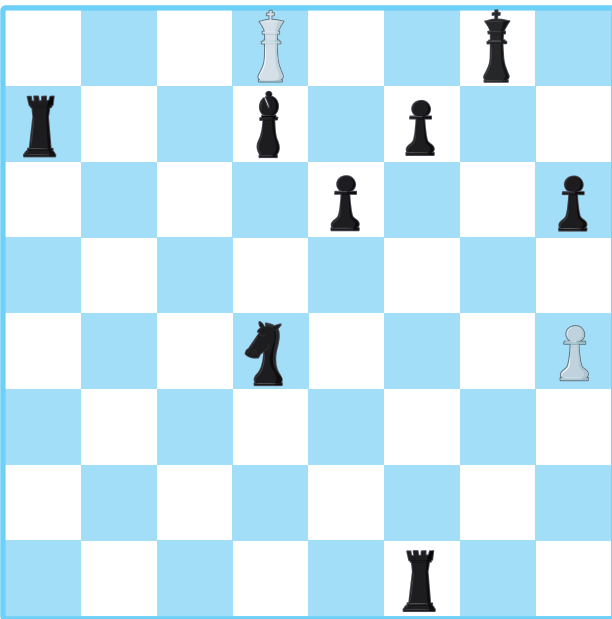
A



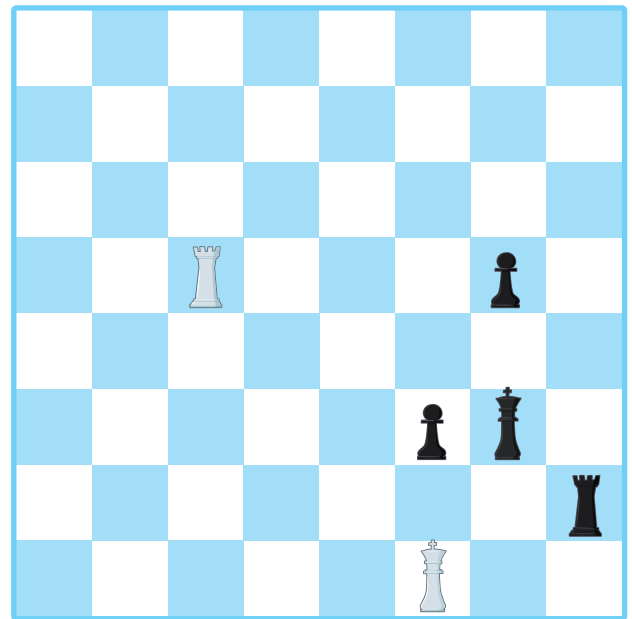
B



C



D



- A. Move either of the rooks down one square.
- B. Move the queen straight down to the bottom of the board.
- C. Move the knight up two and left one.
- D. Move the black rook down one square.

Answers