



Usborne

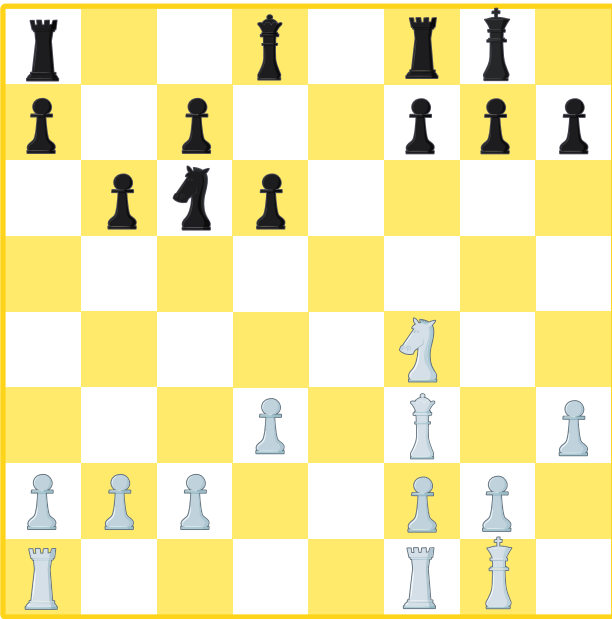
# My first chess puzzles

## 3. Taking prisoners

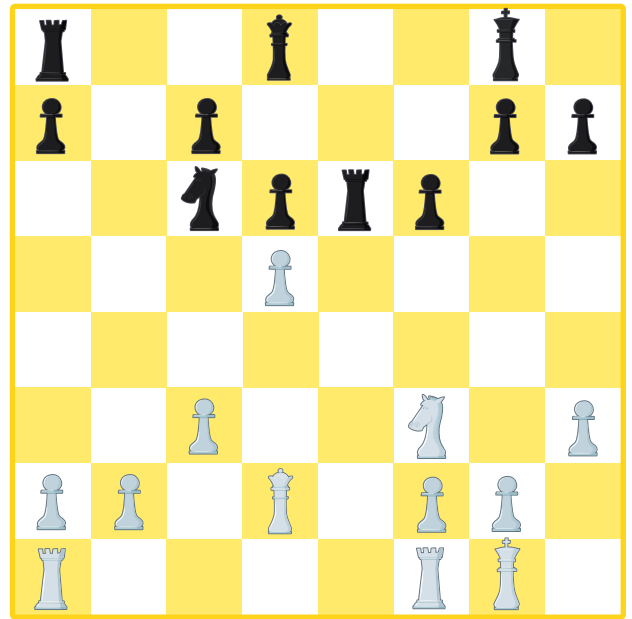
On each board, imagine there's a game going on and it's white's turn to move. Which black pieces can white capture?



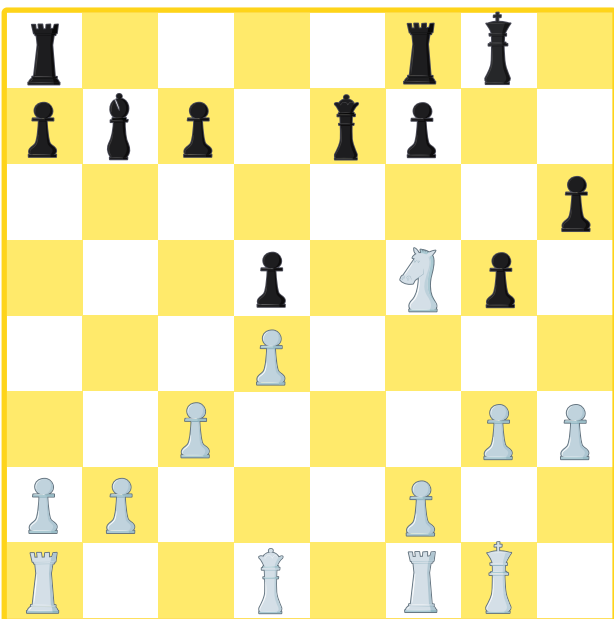
A



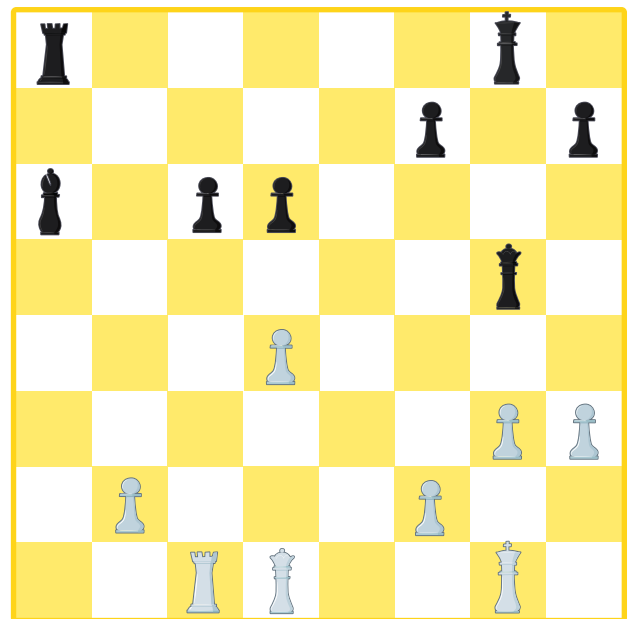
B



C



D



Answers

A. A black knight with the queen.  
C. The queen or a pawn with a knight.

B. A knight or rook with a pawn (it's a fork).  
D. A pawn with a rook.