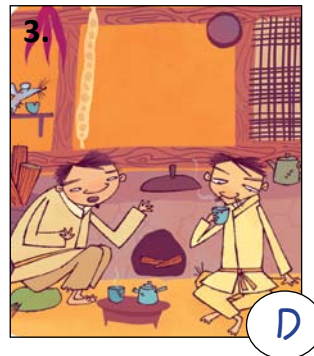
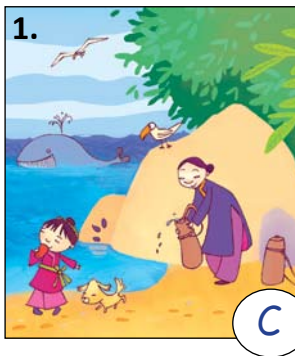


## Why the Sea is Salty • Worksheet answers

### 1. Match the sentences to the pictures.



- A. It all began with a magic millstone.  
 B. He put on his best clothes and went to the palace.  
 C. Long ago, the sea wasn't salty like it is today.  
 D. One day, a thief heard about the millstone.

### 2. Read pages 12-23, then answer TRUE or FALSE.

- A. The thief came from far, far away just to see the palace.  
 B. The millstone is hidden up a chimney.  
 C. The guard knows where the millstone is.  
 D. You have to be a great magician to work the millstone.

TRUE/FALSE

TRUE/FALSE

TRUE/FALSE

TRUE/FALSE

### 3. Put the sentences in story order, numbering them from 1 to 4.

- A. The thief hid the millstone under his cloak. **3**....  
 B. Later, when no one was looking, he crept back again. **1**.....  
 C. He leaped into a boat and sailed away. **4**.....  
 D. He tiptoed into the King's bedroom and reached under the bed. **2**....

### 4. Put a circle around the correct words in the sentences below.

- A. The thief (pit/**put**/pat/pot) some salt on his bun.  
 B. Then he (fill/fall/**fell**/full) asleep, dreaming of riches.  
 C. All night long, the millstone (keep/kept/**kipped**/**kept**) turning.  
 D. The thief (waken/weaken/**was waken**/**was woken**) by something tickling his feet.

### 5. The sea is salty to this very day because...

- A. ...the thief doesn't like sweet water.  
**B**. ...the millstone keeps pouring out salt.  
 C. ...the King played a trick on the thief.